

BACKSTAGE WITH CND  
Rosemount Australian Fashion Week 2010

# Chantilly Lace

## MANNING CARTELL

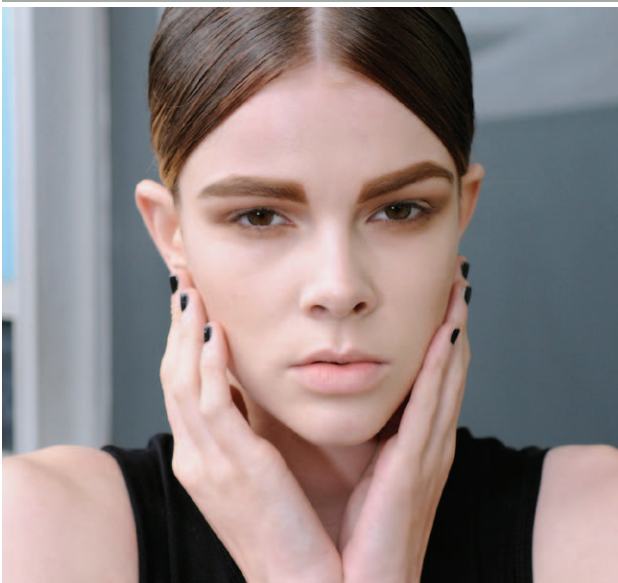
### The Look

The Manning Cartell collection saw sheer lace and feminine ruching teamed with perforated ivory leather. Effortlessly classic shades of pale grey, textured silver, nude beige and black were broken up with the occasional colourful paint splatter design. Flawless natural makeup allowed each piece to speak for itself.

### CND's Finishing Touch

Nails needed to whisper boldness, not shout it. Daintily-shaped, short natural nails were painted with CND's new favourite - Blackjack - a classic, rich black. Bold enough to punctuate Cartell's style statement and subtle enough not to steal the show.

IMAGES: SIX 6 PHOTOGRAPHY



## Nail this look at home:

1. Using a **Kanga File**, shape nails to a short square.
2. Apply one coat of **Stickey Base Coat**.
3. Apply two coats of CND **Blackjack** and allow to dry.
4. Seal your colour with one coat of **Super Shiney Top Coat**. Enhance dry-time and moisturise cuticles with a spritz of **Solar Speed Spray**.

CND   
Hands. Feet. Beauty.

For further information, images & expert comments  
contact Ellie Phillips at Pacific Nail and Beauty:

p: 07 5597 4555 e: [ellie@pacificnail.com.au](mailto:ellie@pacificnail.com.au)